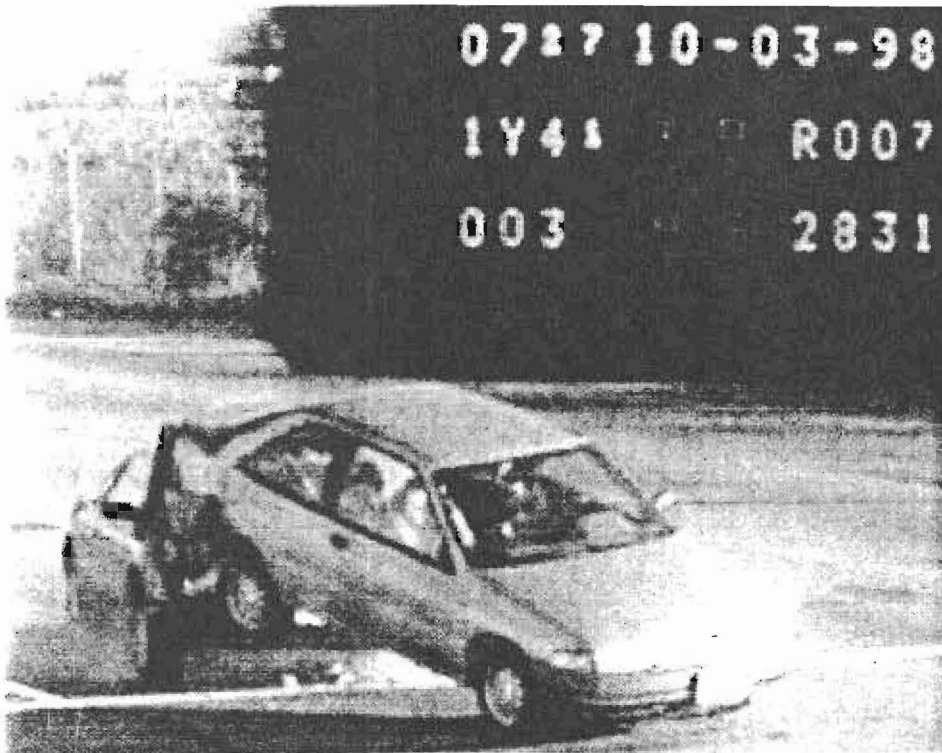
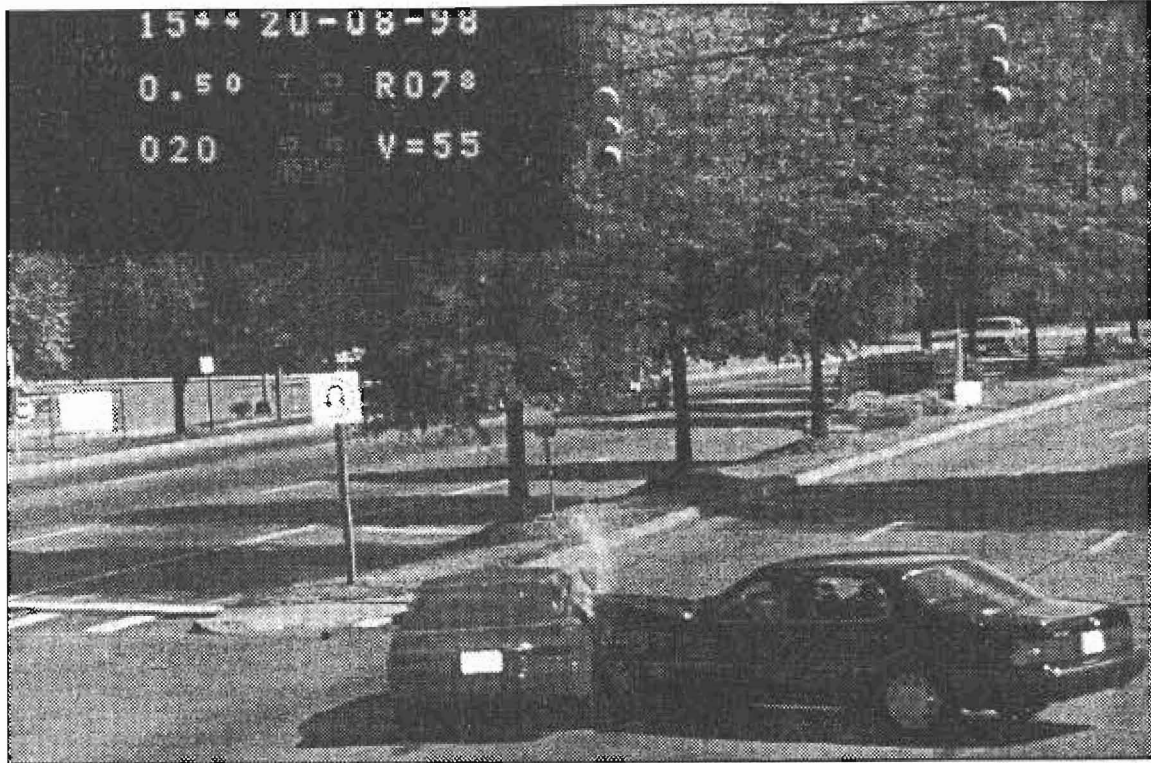


Oxnard, California



Even camera promoters admit that ticket cameras cause an increase in rear-end collisions. They callously downplay the amount and severity. The facts differ. Ticket cameras cause a +70% or more rise in rear-end crashes. As the photos indicate, these collisions can be quite deadly. Since 2001 (after RLTC proliferation) over +600 more people have died in rear-end wrecks, as compared to 1996-2000, at USA signal-related intersections.



Insurance Institute for Highway Safety

A photo of a fatal crash, from a camera enforced intersection in Virginia, graces the cover of the IIHS study, “Automated Enforcement of Traffic Laws”. The camera data is displayed in the photo’s upper left corner. Does anyone else see the irony here? This is like an advertisement for cigarettes showing a photo of a guy in a coffin, while claiming, “cigarettes save lives!”

Photos prove that ticket cameras cannot prevent crashes or “save lives”. They do, however, CAUSE more fatalities as indicated in Studies and Statistics (+500 to +750 nationwide since 2001). Florida—without ticket cameras—recorded a –20% drop in RLV fatalities (-125).